

Maker Education
Design Thinking
Student Leadership Development
Environmental Education
Aesthetics
Talent Development Programmes

- Commonwealth Research in STEM Programme (CRiSP)
- Model United Nations
- Creative Writing Programme

KEY PROGRAMMES



OPEN HOUSE 2016

Mission

Nurturing Commonwealthians as Champions of Today and Leaders of Tomorrow.

Vision

A community of passionate learners who spark imagination, illuminate new frontiers, and inspire change for a better world.

Values

Warmth
Enterprise
Adventurousness
Loyalty
Tenacity
Honour

Follow Us!



@Commonwealth.CWSS



@CWSSsg



@CWSSsg



cwss@moe.edu.sg

www.commonwealthsec.moe.edu.sg
698 West Coast Road, Singapore 608784





Maker's Programme

Students participate in hands-on learning experiences utilising tools and materials to create personally meaningful objects. They learn to use prototyping techniques and new technology such as 3-D printing and micro-controllers. As they tinker, they learn valuable skills and mindsets including resourcefulness, resilience and communication.



Our Co-Curricular Activities

Performing Arts

- Choir
- Drama
- Military Band
- Chinese Dance
- Indian Dance
- Malay Dance

Sports

- Badminton
- Netball (Girls)
- Basketball (Boys)
- Soccer
- Cross Country
- Dragonboat

Uniform Groups

- Girl Guides
- Scouts
- Red Cross
- NCC
- NPCC

Clubs and Societies

- Eco Club
- Culinary Club
- New Media Club
- Bits and Atoms Club

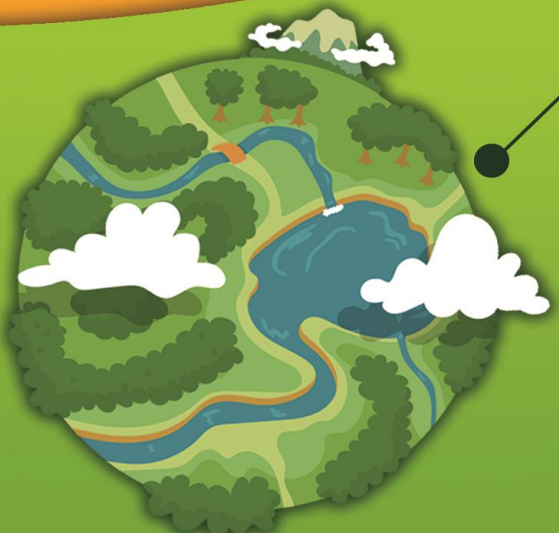


BioDiversity Programme



Design Thinking Programme

Students learn to be human-centred problem solvers. They identify complex challenges, understand the needs of those around them, and then work in teams to prototype and test innovative solutions that meet those needs. Students learn empathy, collaboration skills and value of radical ideas.



Commonwealth prepares our students to be future stewards of the environment, who will work towards a greener and more sustainable future. Our school designed and built several biodiversity habitats in our campus to aid students in their academic learning and environmental education. The school has created natural habitats such as the Rainforest Garde, Forest Stream, Marine Aquarium and Swamp Marshland.